

# Accelerating Freshwater Protection: The Global Biodiversity Framework & 30x30

MARCH 23, 2022

**Amy Newsock**

*Freshwater Protection Advisor  
The Nature Conservancy*

Mrežnica River

© CHIP CAROON

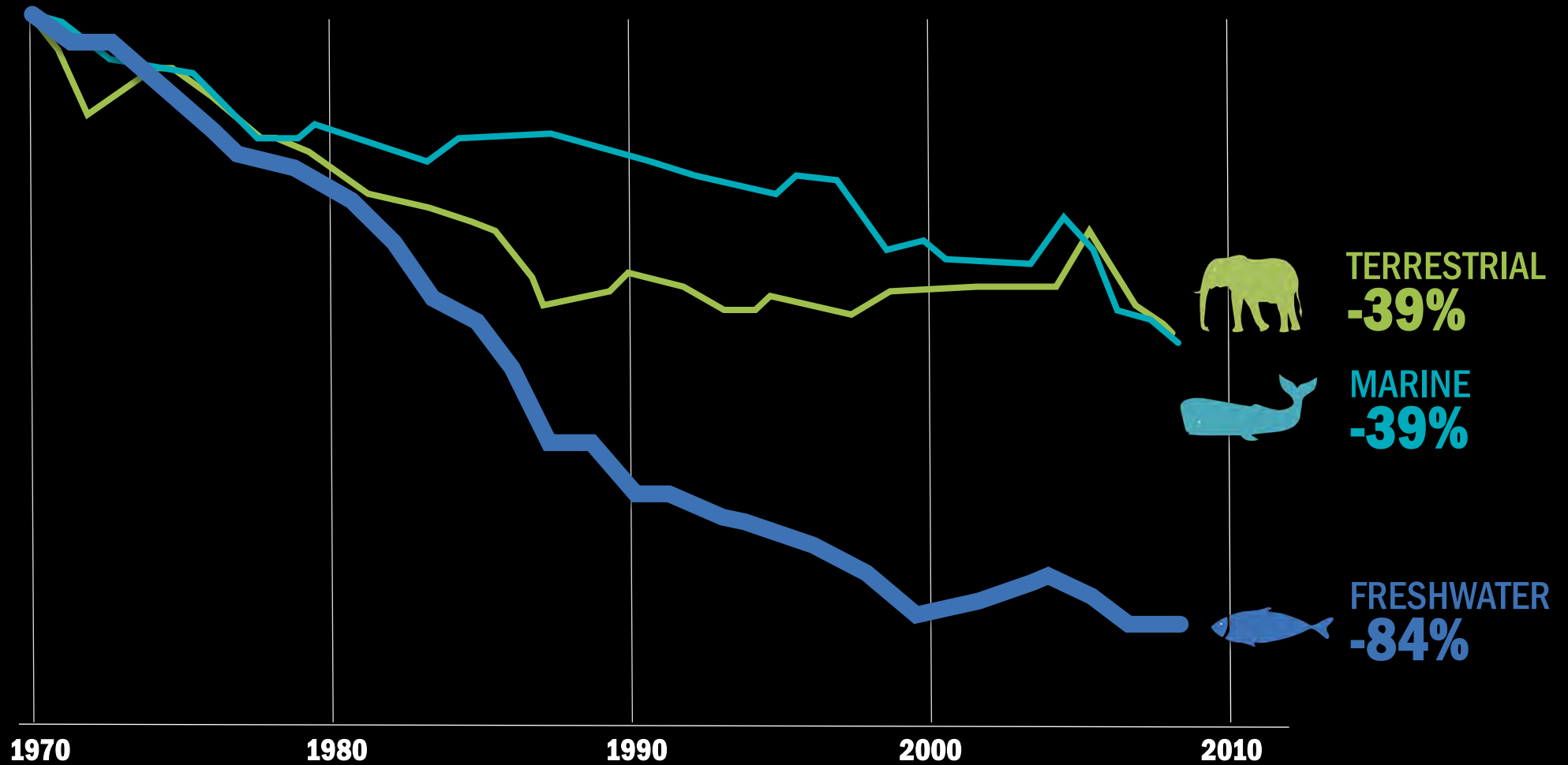



“

If there is magic on this planet,  
**it is contained in water.**

– Loren Eiseley  
American Anthropologist

# Freshwater Species Decline: 1970-2010







**Freshwater ecosystems  
need explicit  
representation  
to change the trajectory**

## Discover Protected Areas



Search for a Region, Country or Area

 Terrestrial Protected Areas

 Marine Protected Areas

### Map Disclaimer

The designations employed and the presentation of material on this map do not imply the expression of any opinion whatsoever on the part of the Secretariat of the United Nations concerning the legal status of any country, territory, city or area or of its authorities, or concerning the delimitation of its frontiers or boundaries. Final status of the Abyei area is not yet determined.

# Durable Freshwater Protection Framework

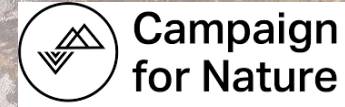
- What is the value that you wish to protect?
- What ecological processes sustain that value?
- What are the threats to those processes?
- What mechanisms (legal or non-legal) are available to address those threats?
- What mechanisms are potentially appropriate given the threats and the socioeconomic contexts for protection?
- How durable are the protection mechanisms?
- How should protection be adaptively managed over time given successes or failures of applied mechanisms and/or changes in context?

EXAMPLE



# Stepping up for Freshwater in 30x30 and the Global Biodiversity Framework

- ▶ CBD and the GBF
- ▶ The DRPC and Campaign for Nature
- ▶ Implementation resources w/ WCPA
- ▶ On land and in water...
  - U.S.
  - Gabon
  - Kenya
  - Mongolia
  - Western Balkans
  - Amazon (emerging)





# Thank You

Ichetucknee Springs, FL

© JENNIFER ADLER

# Durable Freshwater Protection Framework

Define Values

Identify KEAs  
and the  
threats and  
sources to  
them

Identify  
potential  
mechanism(s)

Implement  
mechanism(s)  
at appropriate  
scale(s)

Evaluate and  
adaptively  
manage